



MONTHLY MEMBERSHIP PROGRESS REPORT

District 26 M2

Results as of: 5/31/2017

GMT: HAL GRIFFIN

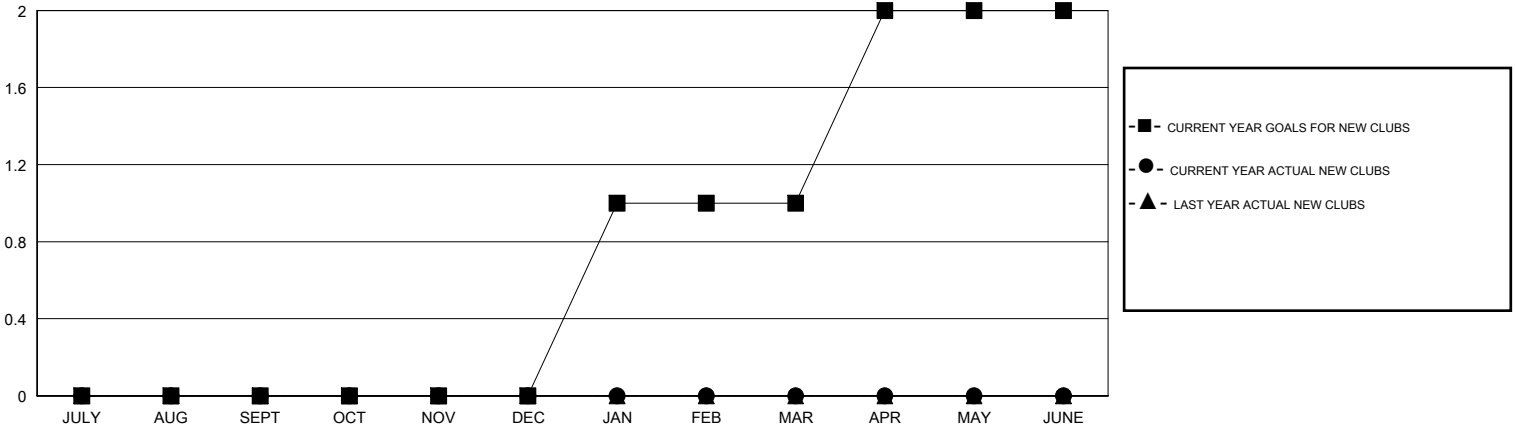
LOCATION MISSOURI

GMT CA

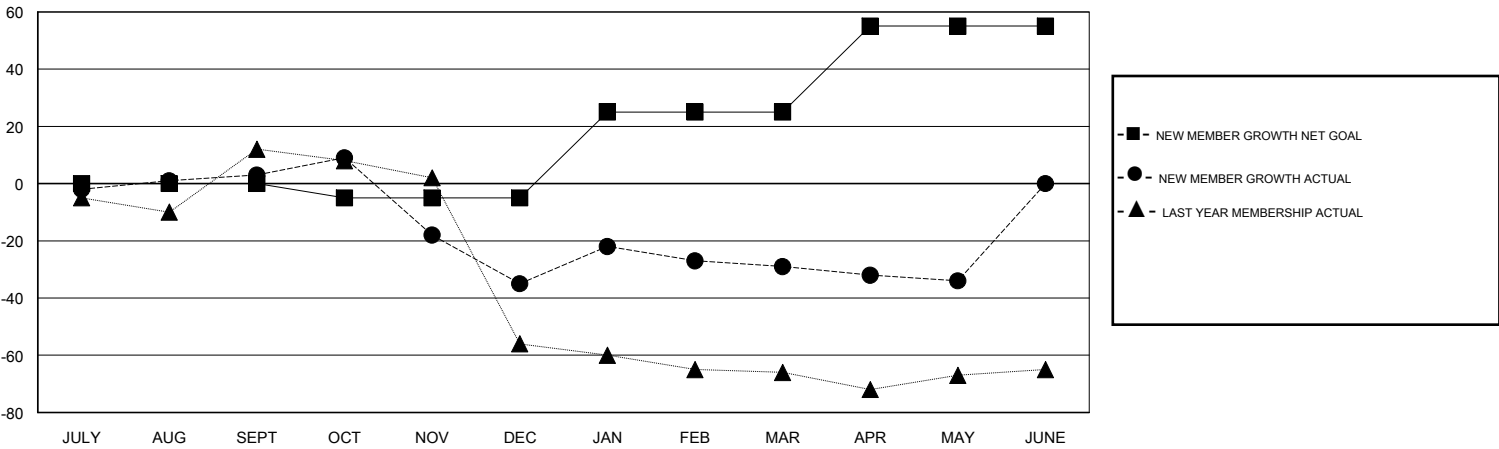
Clubs			
RESULTS FOR 2016-2017			
QUARTER	NEW CLUB GOAL	NEW CLUBS	DROPPED CLUBS
JULY/AUG/SEPT	0	0	0
OCT/NOV/DEC	0	0	1
JAN/FEB/MAR	1	0	0
APR/MAY/JUNE	1	0	1

Members			
RESULTS FOR 2016-2017			
QUARTER	NEW MEMBER GROWTH NET GOAL (not reinstated or transfers)	NEW MEMBER GROWTH ACTUAL (not reinstated or transfers)	DROPPED MEMBERS ACTUAL (including transfers)
JULY/AUG/SEPT	0	28	25
OCT/NOV/DEC	-5	20	58
JAN/FEB/MAR	30	43	37
APR/MAY/JUNE	30	12	17

GOALS AND ACTUAL NEW CLUBS CUMULATIVE



GOALS AND ACTUAL MEMBERS CUMULATIVE



DROPPED CLUBS: 2	26 CLUBS OF 41 ADDED 1 OR MORE NEW MEMBERS	GENDER DISTRIBUTION
		MALE 1,031 (72.15%)
		FEMALE 398 (27.85%)
DROPPED MEMBERS	CLICK HERE FOR CUMULATIVE MEMBERSHIP DATA	TOTAL FAMILY UNIT MEMBERS 318
DECEASED 18		FAMILY MEMBERS PAYING HALF DUES 165
CLUB CANCELLED 25		
OTHER 94		
TOTAL 137		